

COMPANY CATALOG

Revolutionize your business with the most in-demand
FDA-cleared aesthetic and medical machines.

Canada 



CPMT Laser

Precision, Innovation & Excellence in Laser Manufacturing



www.cpmt-laser.com

TORONTO HQ: (647) 492 2523 | 460 Garyray Drive, Toronto, ON, M9L1P8, CA
MIAMI: (833) 985 1717 | 66 W Flagler St., Miami, FL 33130, USA





CPMT Laser

CPMT LASER, an acronym for Canadian Pioneer Medical Technology, is a leading Canadian manufacturer of advanced medical aesthetic laser machines, including Alexandrite and Nd: YAG Laser Systems, Quadruple Laser, Fractional CO2 Laser, Micro-Fractional RF, Pico, Q-Switched Nd: YAG, EMS, Blended Triple Laser, AquaPro Systems, Diode Lasers, IPL, HIFU and RF systems.

We hold the largest portfolio of FDA-cleared aesthetic lasers in North America, with 20 approved systems and counting.

Our commitment to maintaining the highest standards ensures that our designs are both effective and safe.

One of the strongest Alexandrite & Nd:YAG lasers in the world today.

The highest fluence for the largest spot size (26mm) in the market. Outstanding results, remarkable efficiency and lightning-fast treatments.



K222673

FDA
K232133



PureLase
FRACTIONAL
CO2 LASER

FDA
K232133



VanLase
FRACTIONAL
CO2 LASER

FDA
K241601



MagnaCore
BODY
SCULPTING

FDA
K222673



CanLase
ALEXANDRITE &
Nd:YAG



CPMT Pico
PICOSECOND
LASER



Mandolase
Q-SWITCHED
Nd:YAG



RichLase
QUAD, RF, IPL, Q-
Nd:YAG



TorAir
SMART SKIN
COOLING

QUADRUPLE LASER SYSTEM

SoftTouch®, DermaCore®, DermaPulse®, AresFusion®)

- OVER 50 TREATMENTS like permanent hair removal, vascular and benign pigmented lesions, and more
- The only real quadruple laser in the world cleared by US FDA
- Highest fluence and frequency in the market today
- 8 handpieces individually cleared by the US FDA
- Unlimited shots for the first year, free training and certification



FDA
K222915

CPMT Ares



FDA
K222915

CPMT Nemesis



FDA
K222915

CPMT Grace+



FDA
K222915

CPMT Nyx+

SIMULTANEOUS TRIPLE (AresFusion®)

- Permanent hair removal
- Skin rejuvenation and tightening
- Vein therapy for spider veins, venous lake, port wine stains
- Benign pigmented lesions and hyperpigmentation
- Angiomas and hemangiomas



FDA
K211722

Ares



FDA
K211722

Nemesis



FDA
K211722

Grace+



FDA
K211722

Nyx+

DIODE LASER SYSTEM (DermaCore®)

Painless permanent hair removal



FDA
K212793

Armo



FDA
K212793

Hera



FDA
K210033

Grace



FDA
K210033

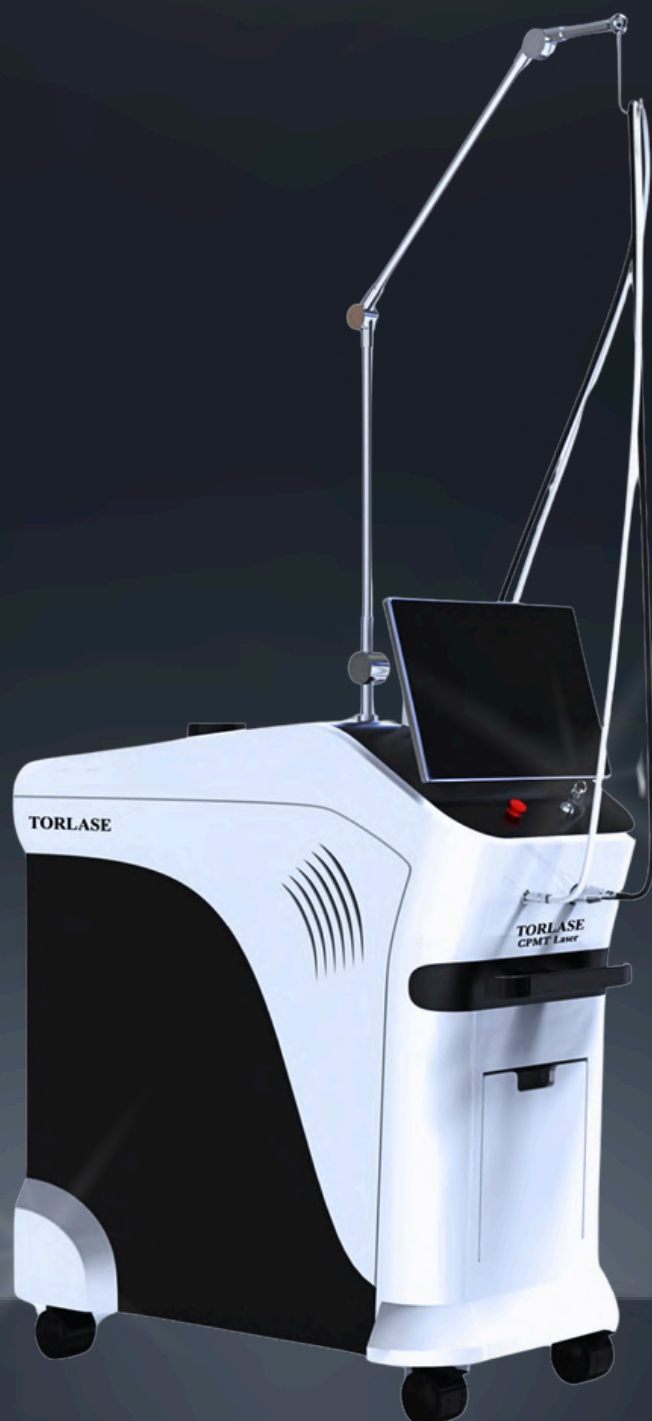
Nyx

TABLE OF CONTENTS

Alexandrite and Nd:YAG (755 and 1064nm)	
TorLase	1
TorAir (Cooling System)	6
CanLase	9
 CO2 Laser System	
PureLase	12
 Featured Machines	
MagnaCore	18
MandoLase	21
CPMT Pico	24
 Quadruple Laser System (755, 808, 1064 nm, blended)	
CPMT Ares (Signature)	27
CPMT Nemesis (Compact)	33
CPMT Grace+ (Sleek)	36
CPMT Nyx+ (Portable)	36
 Blended Triple Laser (755, 808, 1064 nm)	39
Ares (Signature)	
Nemesis (Compact)	
Grace+ (Sleek)	
Nyx+ (Portable)	
 Diode Laser (808 nm)	43
Armo (Signature)	
Hera (Compact)	
Grace (Sleek)	
Nyx (Portable)	

TORLASE

ALEXANDRITE & Nd:YAG



Over 30 Applications

Permanent hair removal, vascular and pigmented lesions, skin rejuvenation, tattoos, melasma, and more.



26mm

Large Spot Size for Fast Treatments

Maximize coverage with a powerful 26mm spot size for fast treatments.



Industry-Leading Laser Power

Delivers the highest fluence available for large spot sizes and high frequency – ensuring powerful performance without compromising speed



Superior Clinical Outcomes

Combines outstanding results with remarkable efficiency while enabling lightning-fast treatments.



Universal Voltage

Works seamlessly worldwide—110 to 240 V, no need for external transformers



TORLASE

Long-Pulse Alexandrite 755 nm

Target Melanin and Fine Hair Follicles with Laser Accuracy



Precision Melanin Targeting for Clearer, Smoother Skin



Advanced Follicle Focus for Permanent Hair Removal

Highly Effective for Light Skin



Optimized for Fitzpatrick I–III, delivering precise melanin targeting.

Fast Hair Removal



Larger spot sizes enable quick treatments with fewer passes.

Targets Pigmented Lesions



Treats sun spots, age spots, and freckles with excellent clearance rates.

Minimized Skin Irritation



Long-pulse duration reduces risk of epidermal damage and post-treatment redness.

TORLASE

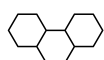
Long-Pulse Nd:YAG 1064 nm

Deeper Penetration for Course Hair and Darker Skin Tones

The Nd:YAG (Neodymium-doped Yttrium Aluminum Garnet) laser also operates in long-pulse mode making it penetrate deeper into the skin.



Specialized for Darker Skin



Ideal for Fitzpatrick IV–VI, with deeper penetration and minimal melanin absorption.

Deeper Skin Penetration



Targets spider veins, facial redness, and vascular lesions with precision.

Skin Tightening / Rejuvenation



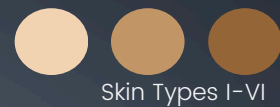
Stimulates collagen production in deeper dermal layers for skin tightening.

No Down Time



Long-pulse technology protects the epidermis, allowing for safer, low-recovery treatments.

TORLASE Technical Specifications



Skin Types I-VI



Variable Spot Sizes

1.5, 3, 6, 10, 12, 18, 20,
22, 24, 26 mm



Energy per Area (Fluence)

755nm: 425 J/cm²
1064 nm: 566 J/cm²



Energy per Pulse

755nm: 70J
1064 nm: 110 J



Pulse Duration

0.25 - 100 ms



Universal Voltage

Wide Range 110 to 240



Pulse Repetition

0.5 - 10 Hz

Dimensions	114 kg, 98 x 60 x 133 cm
Certification	FDA Cleared K222673
Manufacturer	CPMT Laser
Country	Canada
Warranty Details	1 year (extendable to 5)

[back to top](#)

Treatments and Applications



permanent
hair removal



tattoo
removal



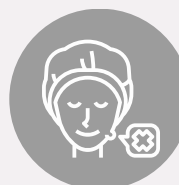
benign
pigmented
lesions



rejuvenation/
tightening



vascular
lesion
treatment



angioma/
hemangioma



nail fungus
treatment



pseudo-
folliculitis
barbae (PFB)



spider veins



facial vessels
treatment

OTHER APPLICATIONS

Wrinkle reduction, port-wine stain, facial telangiectasias, photocoagulation and hemostasis of pigmented & vascular lesions, warts, rosacea, venous lake, leg veins, soft tissue coagulation, age spots, sun spots, café au lait spots, seborrheic keratosis, moles or nevi, chloasma reduction, verrucae, skin tags, keratosis, plaque removal, lesion size-reduction, laser-resistant lesion treatment, raised scar redness reduction, keloid scar redness reduction.

TorAir

SMART COOLING



Spot Cooling up to -33 °C

Provides deep, targeted cooling for safer, more comfortable treatments.



Skin Damage Prevention

Protects skin by minimizing heat buildup during laser procedures.



Temporary Anesthetic

Delivers numbing effect for enhanced patient comfort during treatments.



Quick and Easy Integration

Seamlessly connects with most aesthetic systems—no complex setup needed

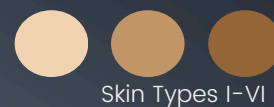


Voltage Selection

Works seamlessly worldwide—no need for external transformers or converters.

TORAIR

Technical Specifications



Skin Types I-VI



Minimum Temperature
-33 °C



Cold Medium
R 404A Refrigerant



Adjustable High Air Volume
Up to 2 m³/min (440 gal/min)



220 110 Voltage Selection
Compatible worldwide

Dimensions	78 kg, 69 x 46 x 104 cm
Power Wattage	800 Watts
Manufacturer	CPMT Laser
Country	Canada
Warranty Details	1 year (extendable to 5)

[back to top](#)

TorAir

Smart Cold-Air Cooling Device



GENUINE COLD AIR (-33°C)

The TorAir cold air device is designed to reduce pain and thermal damage during laser and dermatological procedures, as well as to provide temporary topical anesthesia before administering injections.



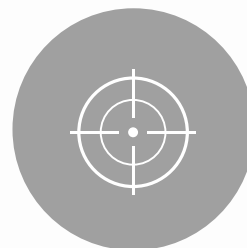
USER FRIENDLY

TorAir incorporates a 7-inch display that prominently shows all treatment parameters. With its intuitive tactile glass keyboard, the device ensures effortless use - simply press 'Start.'



HANDS-FREE COOLING

The lightweight application hose can be connected directly to various laser handpieces allowing adjustments to the air flow.



TARGETED

The cold air can be more selectively directed or targeted onto localized treatment areas by utilizing the laser handpiece adapter.

CANLASE

ALEXANDRITE & Nd:YAG



Over 30 Applications

Permanent hair removal, vascular and pigmented lesions, skin rejuvenation, tattoos, melasma, and more.



Self-Cooling Handpiece

Revolutionary gel-free and Nitrogen-free integrated cooling for precise, pain-minimized laser treatments.



Superior Clinical Outcomes

Combines outstanding results with remarkable efficiency while enabling lightning-fast treatments.

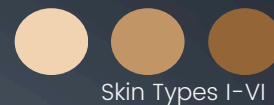


Voltage Selection

Works seamlessly worldwide—no need for external transformers or converters.

CANLASE

Technical Specifications



Skin Types I-VI



Variable Spot Sizes

3-10 mm or 12-18 mm
(Precise 1 mm steps)



Energy per Area (Fluence)

755nm: 425 J/cm²
1064 nm: 566 J/cm²



Pulse Duration

0.25 - 100 ms



Voltage Selection

Globally Compatible



Pulse Repetition

0.5 - 10 Hz

Dimensions	106 kg, 115 x 52 x 125 cm
Certification	FDA Cleared K222673
Manufacturer	CPMT Laser
Country	Canada
Warranty Details	1 year (extendable to 5)

[back to top](#)



permanent
hair removal



tattoo
removal



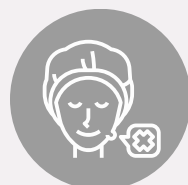
benign
pigmented
lesions



rejuvenation/
tightening



vascular
lesion
treatment



angioma/
hemangioma



nail fungus
treatment



pseudo-
folliculitis
barbae (PFB)



spider veins



facial vessels
treatment

OTHER APPLICATIONS

Wrinkle reduction, port-wine stain, facial telangiectasias, photocoagulation and hemostasis of pigmented & vascular lesions, warts, rosacea, venous lake, leg veins, soft tissue coagulation, age spots, sun spots, café au lait spots, seborrheic keratosis, moles or nevi, chloasma reduction, verrucae, skin tags, keratosis, plaque removal, lesion size-reduction, laser-resistant lesion treatment, raised scar redness reduction, keloid scar redness reduction.

PureLase

FRACTIONAL CO2 LASER



Versatile Treatment Power

From skin resurfacing to CO2-based medical and dental surgeries—all in one advanced, multi-use system.



Precision CO2 Technology

10,600 nm wavelength delivers safe, effective results across a wide range of skin and surgical treatments.



Advanced Scanning Modes

Customizable patterns—spiral, grid, circle, curved, and more—for precise, personalized treatment.



Dermatology Made Simple

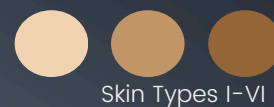
Treats scars, stretch marks, warts, moles, and sagging skin with a flexible, must-have dermatological platform.



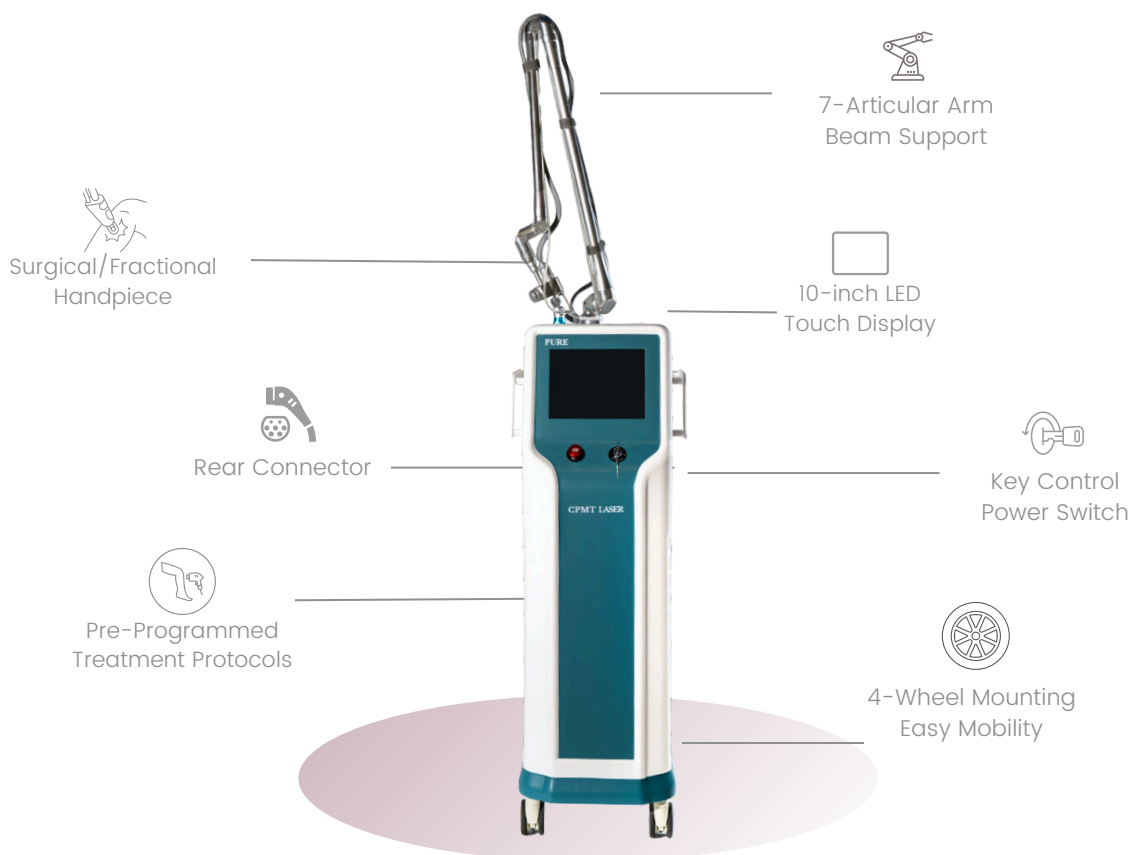
Universal Voltage

Works seamlessly worldwide—110 to 240 V, no need for external transformers

PURELASE Technical Specifications



Skin Types I-VI



Scan Patterns

Square, rectangle, triangle, line, spiral, round, oval, 6-diamond, customizable

110 240

Universal Voltage

Wide Range 110 to 240



Surgery Mode

Pulse, Super pulse, Single, Continuous



Manual Mode

Fractional, Cut, 3D, 4D



Scan Size

0.1*0.1 mm to 20*20 mm



Scan Interval

0-6 Seconds



Wavelength

10,600 nm



Max Power

Up to 40 Watts

Dimensions	40 kg, 109 × 36.5 × 22cm
Certification	FDA Cleared K232133
Manufacturer	CPMT Laser
Country	Canada
Warranty Details	1 year (extendable to 5)

[back to top](#)

PURELASE Handpieces and Inclusions



SURGICAL HANDPIECE



FRACTIONAL HANDPIECE
(optional)



LASER ARM



ULTRA FRACTIONAL
TIP (150 Microns)



MICRO ABLATIVE TIP
(400 Microns)



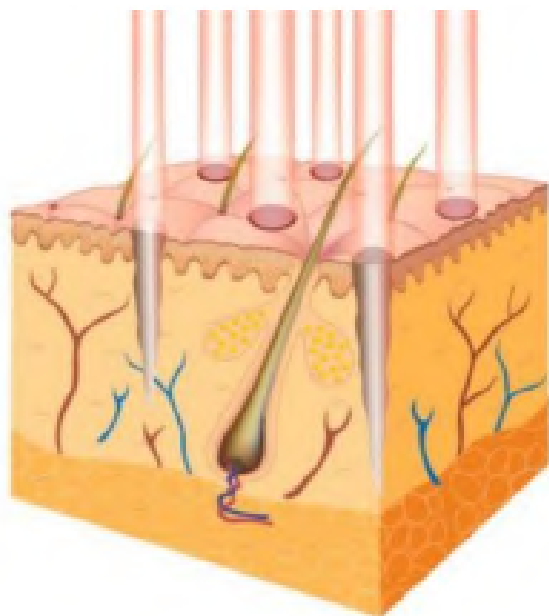
NON ABLATIVE TIP
(800 Microns)



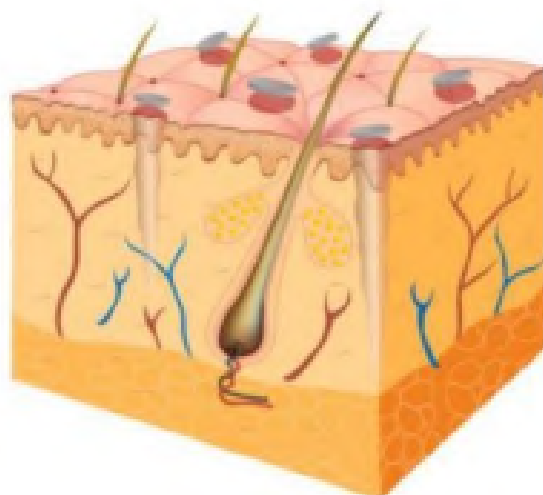
VAGINAL PROBES
(OPTIONAL)



How PureLase Works



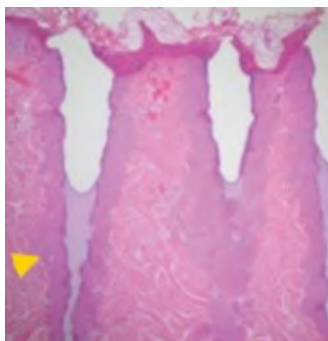
The CO₂ laser works at a specific wavelength of 10,600 nm. When this laser is radiated on the body, it mainly affects the water inside tissues. The water in cells and tissues absorbs the laser energy. The absorbed energy makes the tissue heat up.



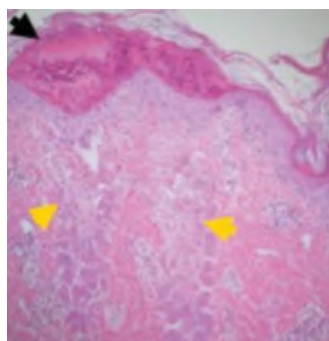
If we add even more energy, the tissue can turn into vapor. The heat also helps with wound healing. It makes the tissue around the treated area thicken and form a protective layer.



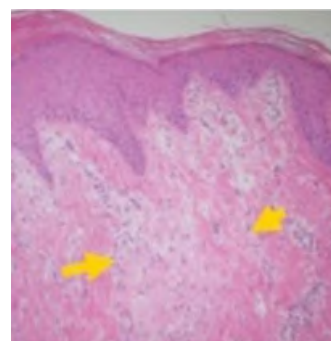
Micro-ablation columns created by the laser beams.



Rounded healthy tissue promotes rapid healing.



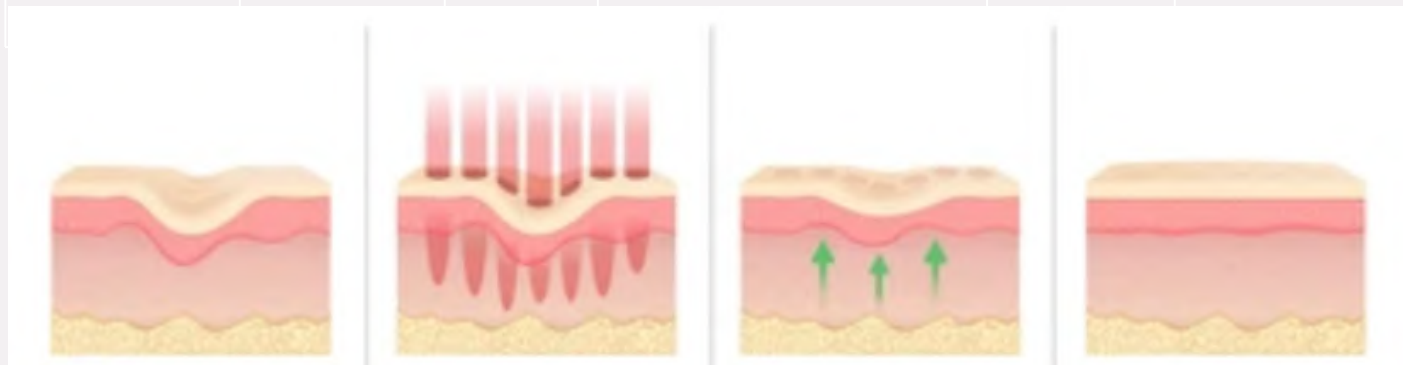
New collagen forms and the surface is restored.



Collagen remodeling continues up to 9 months.

What is PureLase for?

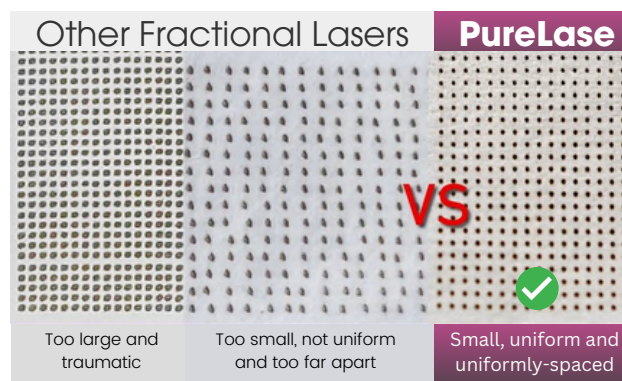
TECHNOLOGY	PENETRATION DEPTH (MM)	ABLATION	PRIMARY TARGET	DOWNTIME	SKIN RESURFACING
Glass CO ₂ Fractional	0.5 – 1.2	Ablative	Water in epidermis/superficial dermis	Moderate to High	Moderate
RF CO ₂ Fractional	0.8 – 2.0	Ablative	Water in epidermis and dermis	Moderate to High	Strong



RF FRACTIONAL CO₂ LASER provides deep penetration and more consistent ablative energy delivery than other treatments, making it highly effective for treating deep wrinkles, acne scars, and skin laxity. It delivers stronger resurfacing results, controlled thermal damage, and minimal downtime.

PureLase vs Other Co2 Lasers

PureLase CO₂ Laser is a next-generation fractional CO₂ system designed for advanced skin resurfacing and rejuvenation. Utilizing the latest in fractional laser technology, PureLase delivers ultra-precise energy with exceptional accuracy, allowing for controlled penetration into the skin while preserving surrounding tissue. This precision promotes faster healing, reduces downtime, and enhances clinical outcomes.





skin
resurfacing



stretch marks
removal



scar
revision



skin
derivatives



benign tumor
removal



wart/mole
removal



skin
remodeling



skin
rejuvenation



general
surgery



ophthalmology



neurosurgery



dental
surgery



thoracic
surgery



otolaryngology



podiatry &
orthopedics

MagnaCore

BODY SCULPTING & TONING



Deep Muscle Activation

Targets both superficial and deep muscle layers for maximum toning and strengthening results.



Dual Large-Surface Probes

Covers more area in less time with dual applicators designed for efficient, even stimulation.



Customizable Intensity & Timing

Allows adjustment of treatment levels and duration to suit individual needs.



Time-Efficient Workouts

Delivers the equivalent of thousands of muscle contractions in a single session.



Universal Voltage

Works seamlessly worldwide—110 to 240 V, no need for external transformers

MAGNACORE

Technical Specifications



Therapy Time
1-60 Minutes



Intensity
Adjustable



Pulse Amplitude
0-100%, step 1%



Pulse Duration
270 microseconds

110 240

Universal Voltage
Wide Range 110 to 240



Pulse Repetition
1 - 150 Hz

Dimensions	75 kg, 98 x 60 x 133 cm
Certification	FDA Cleared K241601
Manufacturer	CPMT Laser
Country	Canada
Warranty Details	1 year (extendable to 5)

[back to top](#)

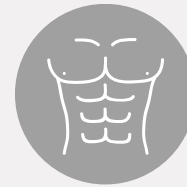
Treatments and Applications



body sculpting



muscle toning &
strengthening



abdomen
contouring



muscle
definition



athletic
performance
enhancement



time efficient
workout
alternative

MandoLase

Q-SWITCHED Nd:YAG



Versatile Applications

Tattoo removal, pigmented lesions, wart removal, scar reduction, psoriasis treatment, stretch marks, moles and birthmarks



Dual Wavelength

532 nm / 1064 nm



High Fluence

Delivers high energy per area (fluence) up to 14 J/cm² for optimal results.



Superior Clinical Outcomes

Combines outstanding results with remarkable efficiency while enabling fast treatments.



High Precision Arm

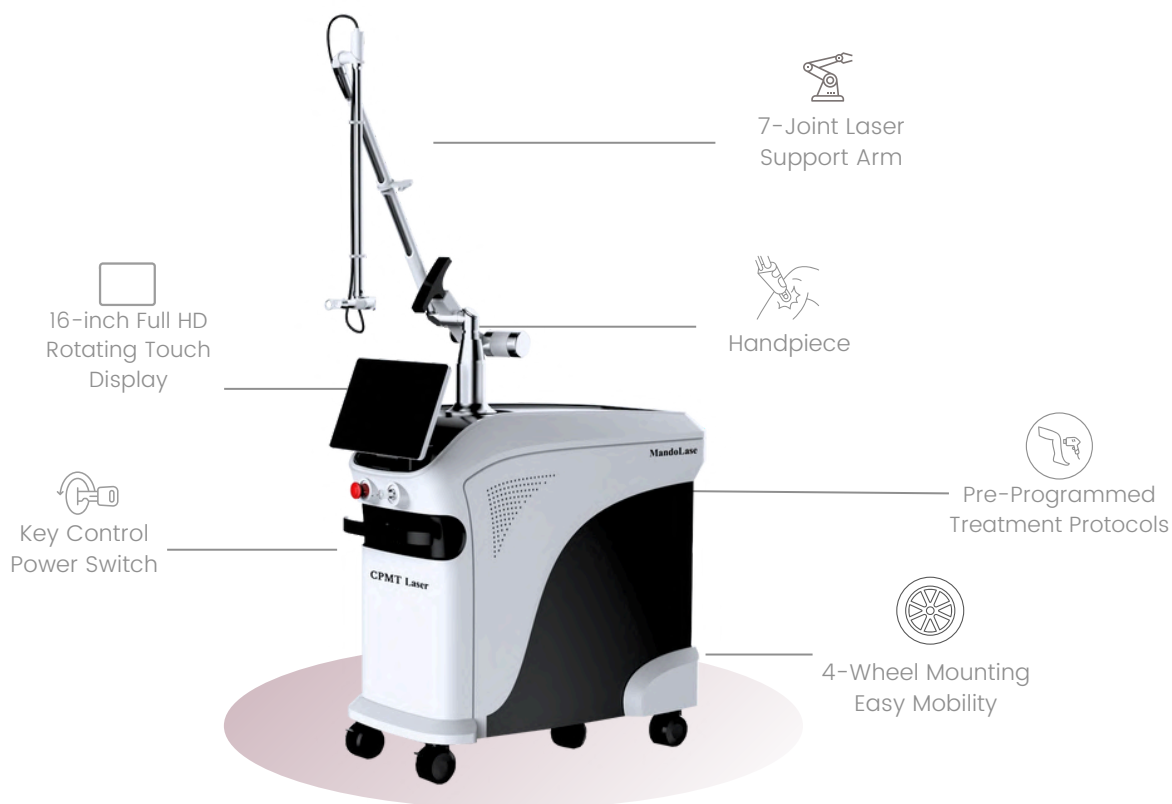
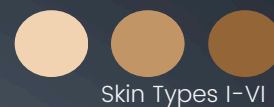
Allows for accurate and targeted treatment.



Universal Voltage

Works seamlessly worldwide—110 to 240 V, no need for external transformers

MANDOLASE Technical Specifications



Single Pulse Energy

532 nm: 100-600 mJ
1064 nm: 200-1200 mJ



Double Pulse Energy

532 nm: 200-1200 mJ
1064 nm: 400-2400 mJ



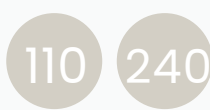
Long Pulse Mode

1064nm: 300-3000µs
(20-80J)



Spot Size

2-10 mm Adjustable



Universal Voltage

Wide Range 110 to 240



Cooling System

4L air+water system

Dimensions	95 kg, 98 x 60 x 133 cm
Power Wattage	2000 Watts
Manufacturer	CPMT Laser
Country	Canada
Warranty Details	1 year (extendable to 5)

[back to top](#)

Treatments and Applications



black/blue
tattoo removal



benign pigmented
lesions



lentigines



wart removal



scar removal



psoriasis



stretch marks



mole removal



birth mark

CPMT Pico

PICOSECOND LASER



Versatile Applications

Tattoo removal, skin rejuvenation, pigmented lesions, acne scars, melasma, birthmarks, moles, non-ablative skin resurfacing, scar revision, permanent hair removal



Ultra-Short Pulse Duration

450 picosecond pulses ensure precise treatment and minimal heat damage to surrounding tissues.



High Pulse Energy

Providing effective results with high pulse energy without excessive heat build-up.



Dual Wavelength Precision

Targets both pigmented lesions and tattoo ink with 532 nm (lighter tattoos) and 1064 nm (darker) wavelengths.

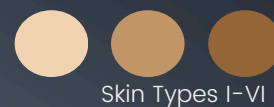


Universal Voltage

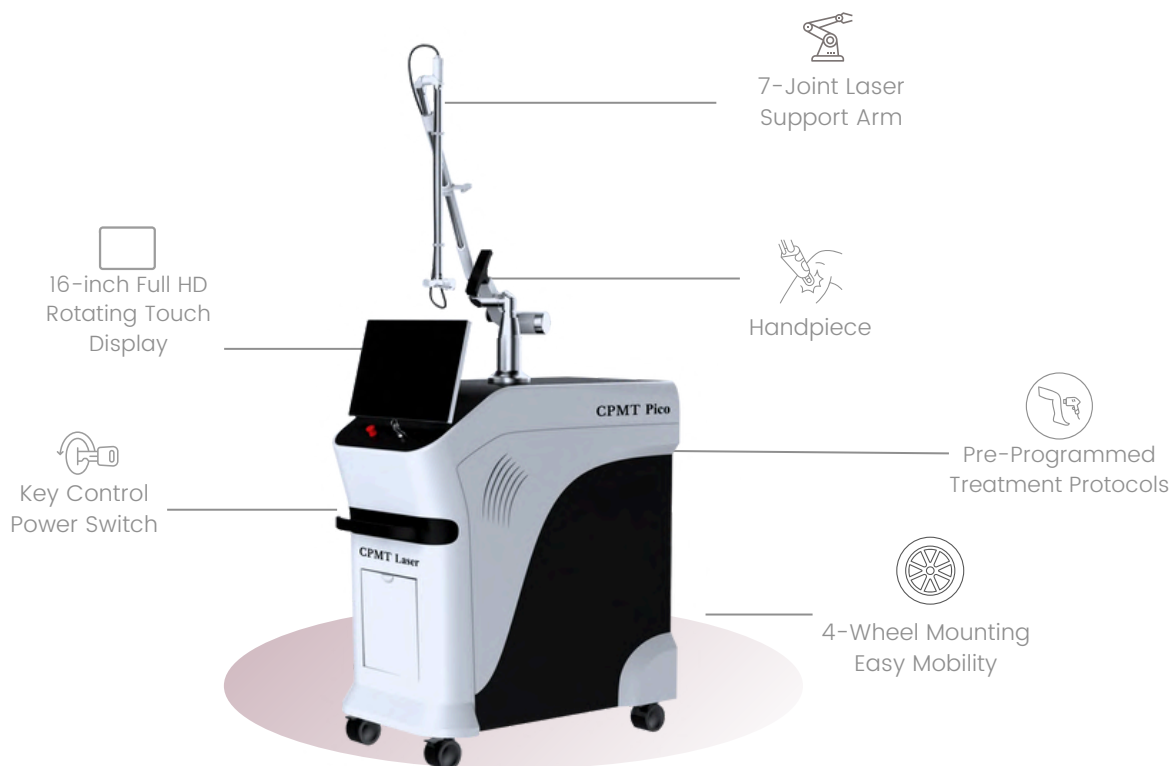
Works seamlessly worldwide—110 to 240 V, no need for external transformers

CPMT PICO

Technical Specifications



Skin Types I-VI



Pulse Energy

532 nm: 250mJ
1064 nm: 500 mJ



Maximum Fluence

532 nm: 15.5 J/cm²
1064 nm: 8.0 J/cm²



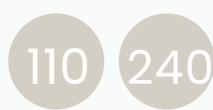
Ultra-Short Pulse Duration

450 ps



Spot Size

2-10 mm Adjustable



Universal Voltage

Wide Range 110 to 240



Frequency

1 - 10 Hz

Dimensions	125 kg, 98 x 60 x 133 cm
Wavelengths	532 nm & 1064 nm
Manufacturer	CPMT Laser
Country	Canada
Warranty Details	1 year (extendable to 5)

[back to top](#)

Treatments and Applications



tattoo
removal



benign
pigmented
lesions



rejuvenation/
tightening



acne scar
removal



nevus or
mole removal



melasma
treatment



birthmark
removal



scar
revision



non-ablative
skin resurfacing

CPMT Ares

Quadruple Laser

SoftTouch®, DermaCore®,
DermaPulse® & AresFusion®



Over 50 Applications

Permanent Hair Removal,
Pigmented Lesions, Melasma,
Freckles, Chloasma and a lot
more



Versatile Handpieces

Includes four interchangeable
handpieces, each equipped
with a specific wavelength
(755, 808, 1064 nm + Blended)



Variable Spot Sizes

One of the first quadruple
lasers with handpieces that
offer varying spot sizes



All Skin Types

Outstanding results for all
skin types including
tanned skin.

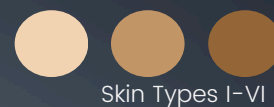


Voltage Selection

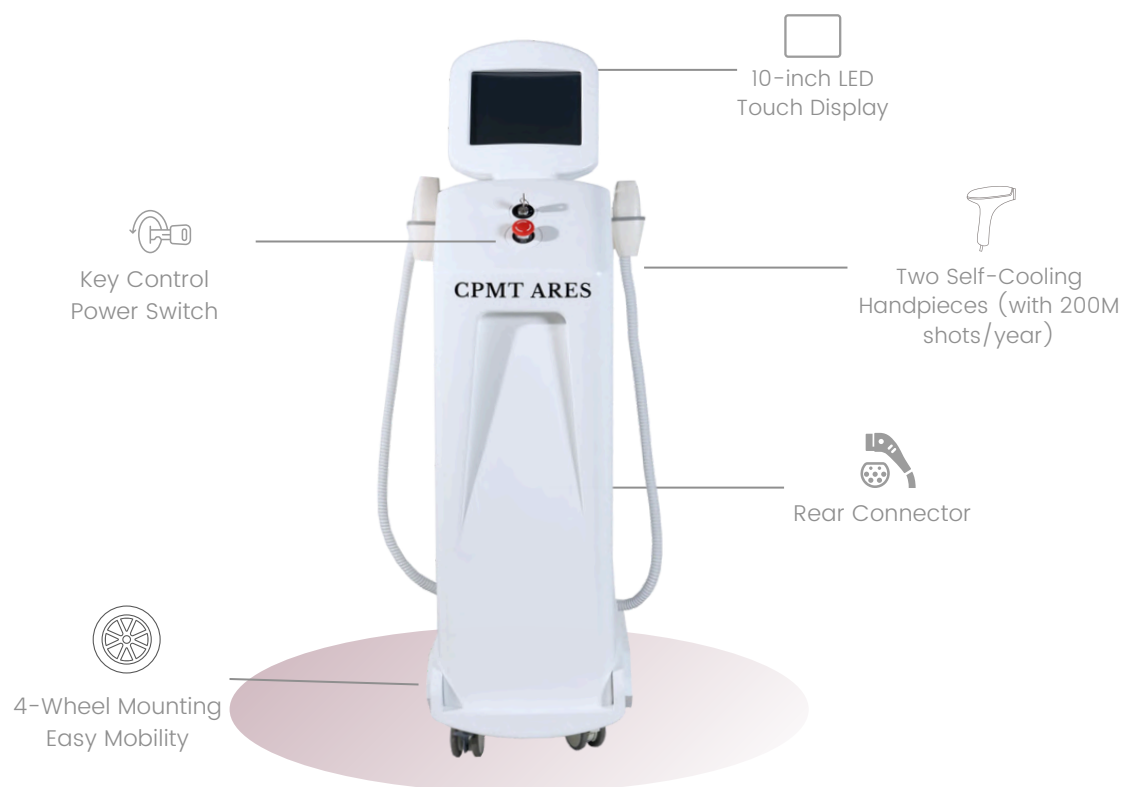
Works seamlessly worldwide
—no need for external
transformers or converters.

CPMT ARES

Technical Specifications



Skin Types I-VI



Spot Sizes
Variable



Energy per Area (Fluence)
120 J/cm²



Pulse Duration
1 – 400 ms



Voltage Selection
Globally Compatible



Pulse Repetition
1 – 10 Hz

Dimensions	54 kg, 93 × 53 × 129 cm
Certification	FDA Cleared K222915
Manufacturer	CPMT Laser
Country	Canada
Warranty Details	1 year (extendable to 5)

[back to top](#)

CPMT Ares

Most Powerful Quad Laser in the Market

FLUENCE refers to the amount of laser energy delivered per unit area (typically measured in joules per square centimeter, J/cm^2). High fluence in a laser machine is associated with increased power and efficacy.

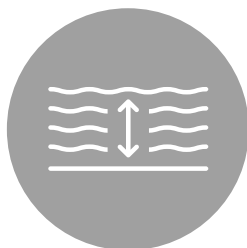


CPMT ARES has $120 J/cm^2$, the highest FDA-cleared fluence in the laser market worldwide.



INCREASED ENERGY DELIVERY

Fluence represents the amount of energy delivered by the laser over a specific area. In simple terms, it measures how densely packed the energy is within the treated region.



TREATMENT DEPTH AND EFFICIENCY

Higher fluence allows the laser to deliver more energy to the targeted tissue. This increased energy density is particularly important in applications such as dermatology and aesthetics, where the goal may be to penetrate the skin to reach specific depths for treatments like hair removal or skin rejuvenation.

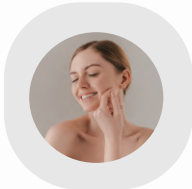


SELECTIVE THERMAL IMPACT ON TISSUES

This is crucial for procedures like coagulation in vascular lesions, where the goal is to selectively heat and treat blood vessels without damaging surrounding tissues.

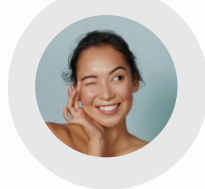
Treatments and Applications

HAIR REMOVAL
SKIN TYPES
I and II



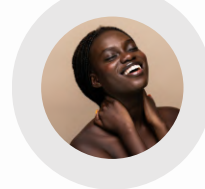
SoftTouch®

HAIR REMOVAL
SKIN TYPES
III and IV



DermaCore®

HAIR REMOVAL
SKIN TYPES
V and VI



DermaPulse®

VASCULAR LESIONS
ALL SKIN TYPES



AresFusion®



permanent
hair removal



melasma
treatment



freckles and
age spots



spider veins



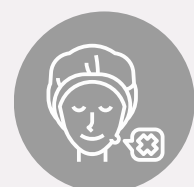
vascular
lesions



facial vessels
treatment



angioma/
hemangioma



blue nevus

OTHER APPLICATIONS:

Rhinophyma, Becker's nevus, Nevus simplex (angel's kiss), Capillary hemangiomas, Telangiectasias, Nevus (moles), Seborrheic keratosis, Solar lentigines, Dermatofibroma, Nevus of Ota, Café-au-lait spots, Keloids, Junctional nevus, Compound nevus, Intradermal nevus, Congenital nevus, Hori's nevus, Poikiloderma of Civatte, Post-inflammatory hyperpigmentation, Pregnancy mask (chloasma), Fitzpatrick's Type III and IV nevi, White nevus, Neurofibromatosis pigmented lesions, Port-wine stains, Venous lakes, Pyogenic granulomas, Nevus flammeus (stork bite), Capillary malformations, Venous malformations, Angiokeratomas, Arteriovenous malformations (AVMs), Telangiectatic matting, Lymphangiomas, Senile purpura, Spider angiomas, Erythema ab igne

CPMT QUADRUPLE LASER WAVELENGTHS

It is important to use the FDA-cleared handpieces with specific wavelengths primarily designed for each individual skin type and body part to avoid risks in treatment.

SoftTouch®



DermaCore®



DermaPulse®

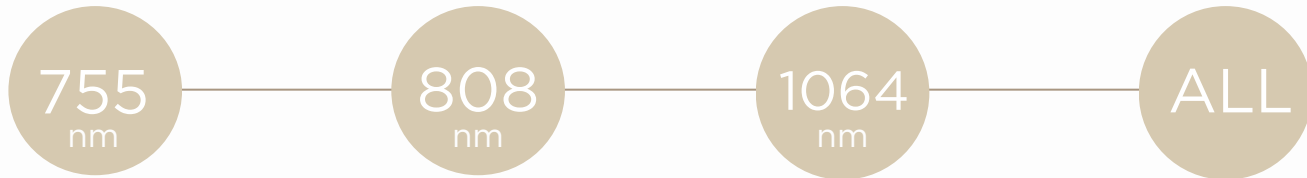


AresFusion®



Hair Type	Skin Types I & II	Skin Types III & IV	Skin Types V & VI
Blonde Hair	SoftTouch	-	-
Red Hair	SoftTouch	-	-
Thin Hair	SoftTouch	-	-
Light Brown Hair	SoftTouch	DermaCore	-
Dark Brown Hair	SoftTouch	DermaCore	DermaPulse
Coarse Black Hair	SoftTouch	DermaCore	DermaPulse
Fine Black Hair	SoftTouch	DermaCore	AresFusion

Self-Cooling Handpieces with VARIABLE SPOT SIZES



Unlike most systems that use handpieces with fixed spot size, CPMT Laser solves this limitation with self-cooling handpieces with **variable spot sizes**.



The CPMT Quad Laser is one of the first quadruple lasers with handpieces that offer varying spot sizes—designed to meet the needs of both precision and speed. Smaller spot sizes are ideal for targeting finer hair and smaller areas like the face or underarms, while larger spot sizes allow for quick, efficient treatment on broader areas like the legs, chest, or back.

CPMT Nemesis

Quadruple Laser

SoftTouch®, DermaCore®,
DermaPulse® & AresFusion®



Over 50 Applications

Permanent Hair Removal,
Pigmented Lesions, Melasma,
Freckles, Chloasma and a lot
more



Versatile Handpieces

Includes four self-cooling
handpieces, each equipped
with a specific wavelength
(755, 808, 1064 nm + Blended)



Variable Spot Sizes

One of the first quadruple
lasers with handpieces that
offer varying spot sizes



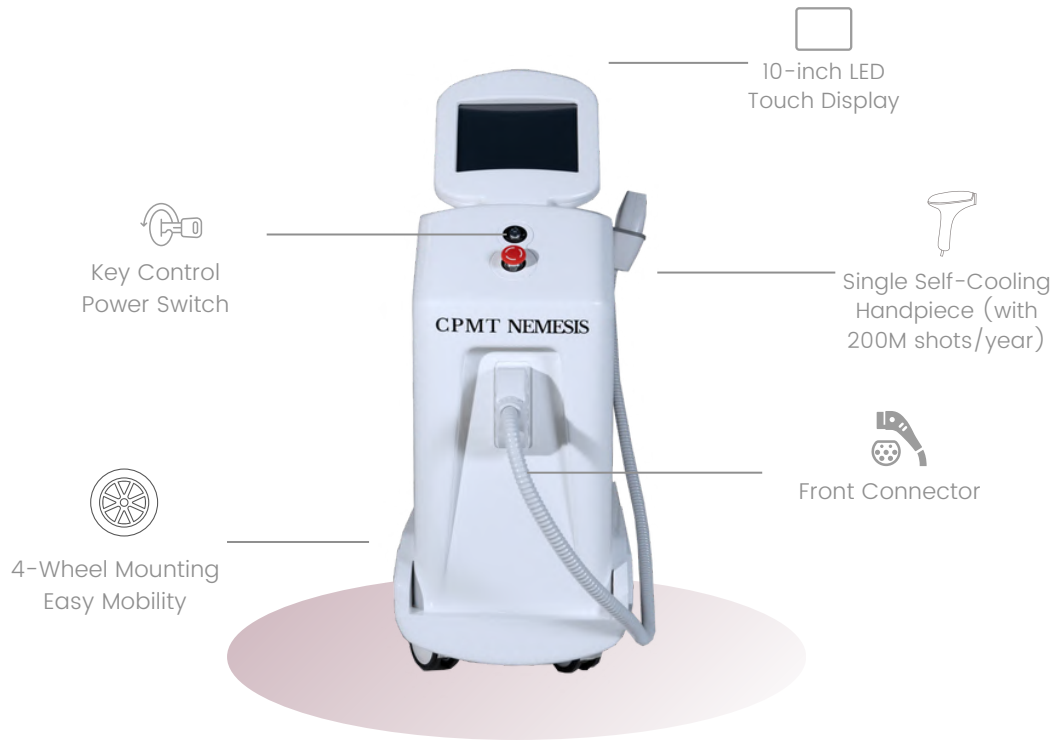
All Skin Types

Outstanding results for all
skin types including
tanned skin.



Voltage Selection

Works seamlessly worldwide
—no need for external
transformers or converters.



Spot Sizes
Variable



Energy per Area (Fluence)
120 J/cm²



Pulse Duration
1-400 ms



Voltage Selection
Globally Compatible



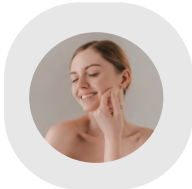
Pulse Repetition
1-10 Hz

Dimensions	72 kg, 79 x 46 x 76 cm
Certification	FDA Cleared K222915
Manufacturer	CPMT Laser
Country	Canada
Warranty Details	1 year (extendable to 5)

[back to top](#)

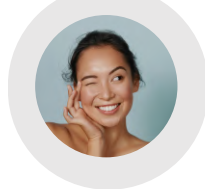
Treatments and Applications

HAIR REMOVAL
SKIN TYPES
I and II



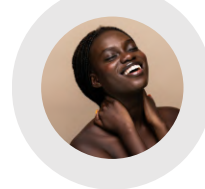
SoftTouch®

HAIR REMOVAL
SKIN TYPES
III and IV



DermaCore®

HAIR REMOVAL
SKIN TYPES
V and VI



DermaPulse®

VASCULAR LESIONS
ALL SKIN TYPES



AresFusion®



permanent
hair removal



melasma
treatment



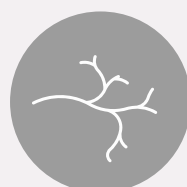
freckles and
age spots



spider veins



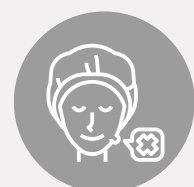
vascular
lesions



facial vessels
treatment



angioma/
hemangioma



blue nevus

OTHER APPLICATIONS:

Rhinophyma, Becker's nevus, Nevus simplex (angel's kiss), Capillary hemangiomas, Telangiectasias, Nevus (moles), Seborrheic keratosis, Solar lentigines, Dermatofibroma, Nevus of Ota, Café-au-lait spots, Keloids, Junctional nevus, Compound nevus, Intradermal nevus, Congenital nevus, Hori's nevus, Poikiloderma of Civatte, Post-inflammatory hyperpigmentation, Pregnancy mask (chloasma), Fitzpatrick's Type III and IV nevi, White nevus, Neurofibromatosis pigmented lesions, Port-wine stains, Venous lakes, Pyogenic granulomas, Nevus flammeus (stork bite), Capillary malformations, Venous malformations, Angiokeratomas, Arteriovenous malformations (AVMs), Telangiectatic matting, Lymphangiomas, Senile purpura, Spider angiomas, Erythema ab igne

Quadruple Laser

SoftTouch®, DermaCore®,
DermaPulse® & AresFusion®

CPMT Grace+

CPMT Nyx+



Over 50 Applications

Permanent Hair Removal,
Pigmented Lesions, Melasma,
Freckles, Chloasma and a lot
more



Versatile Handpieces

Includes four interchangeable
handpieces, each equipped
with a specific wavelength
(755, 808, 1064 nm + Blended)



Variable Spot Sizes

One of the first quadruple
lasers with handpieces that
offer varying spot sizes



All Skin Types

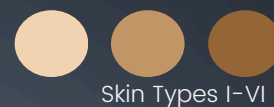
Outstanding results for all
skin types including
tanned skin.



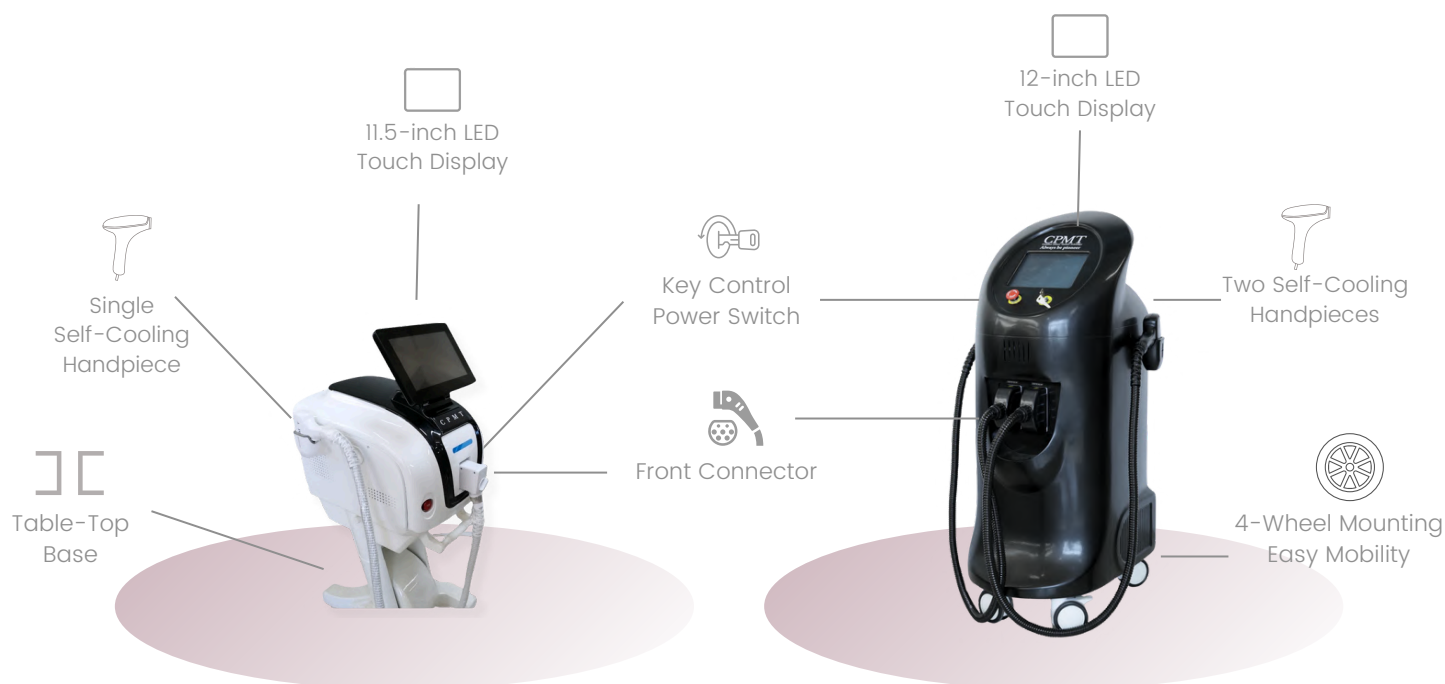
Voltage Selection

Works seamlessly worldwide
—no need for external
transformers or converters.

CPMT NYX+ and CPMT GRACE+ Technical Specifications




Skin Types I-VI




Spot Sizes
Variable


Energy per Area (Fluence)
120 J/cm²


Pulse Duration
1-400 ms

220 110
Voltage Selection
Globally Compatible


Pulse Repetition
1-10 Hz

CPMT NYX+ 35kg, 50 x 60 x 50 cm	CPMT GRACE+ 72 kg, 79 x 46 x 76 cm
Certification	FDA Cleared K222915
Manufacturer	CPMT Laser
Country	Canada
Warranty Details	1 year (extendable to 5)

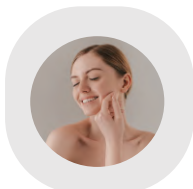
[back to top](#)

Treatments and Applications

HAIR REMOVAL

SKIN TYPES

I and II

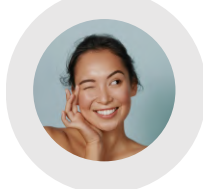


SoftTouch®

HAIR REMOVAL

SKIN TYPES

III and IV

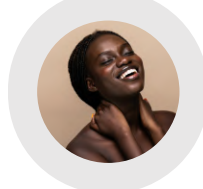


DermaCore®

HAIR REMOVAL

SKIN TYPES

V and VI



DermaPulse®

VASCULAR LESIONS

ALL SKIN TYPES



AresFusion®



permanent
hair removal



melasma
treatment



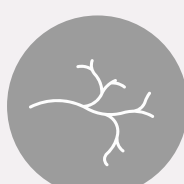
freckles and
age spots



spider veins



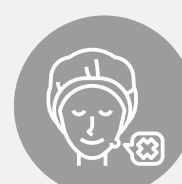
vascular
lesions



facial vessels
treatment



angioma/
hemangioma



blue nevus

OTHERS: Rhinophyma, Becker's nevus, Nevus simplex (angel's kiss), Capillary hemangiomas, Telangiectasias, Nevus (moles), Seborrheic keratosis, Solar lentigines, Dermatofibroma, Nevus of Ota, Café-au-lait spots, Keloids, Junctional nevus, Compound nevus, Intradermal nevus, Congenital nevus, Hori's nevus, Poikiloderma of Civatte, Post-inflammatory hyperpigmentation, Pregnancy mask (chloasma), Fitzpatrick's Type III and IV nevi, White nevus, Neurofibromatosis pigmented lesions, Port-wine stains, Venous lakes, Pyogenic granulomas, Nevus flammeus (stork bite), Capillary malformations, Venous malformations, Angiokeratomas, Arteriovenous malformations (AVMs), Telangiectatic matting, Lymphangiomas, Senile purpura, Spider angiomas, Erythema ab igne

Blended Triple Laser

Powered by AresFusion®

Ares

Nemesis

Grace+

Nyx+



FDA
CLEARED

K211722



Versatile Applications

Permanent hair removal, benign pigmented lesions, vascular lesion treatment.



Precise Targeting

Delivers targeted energy to hair follicles and vascular lesions for optimal results.



Minimal Downtime

Minimal damage to surrounding tissue.



Variable Spot Sizes

One of the first triple lasers with handpieces that offer varying spot sizes



Voltage Selection

Works seamlessly worldwide —no need for external transformers or converters.



Spot Sizes
Variable

Energy per Area (Fluence)
120 J/cm²

Pulse Duration
1-400 ms

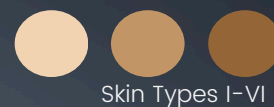
Voltage Selection
Globally Compatible

Pulse Repetition
1-10 Hz

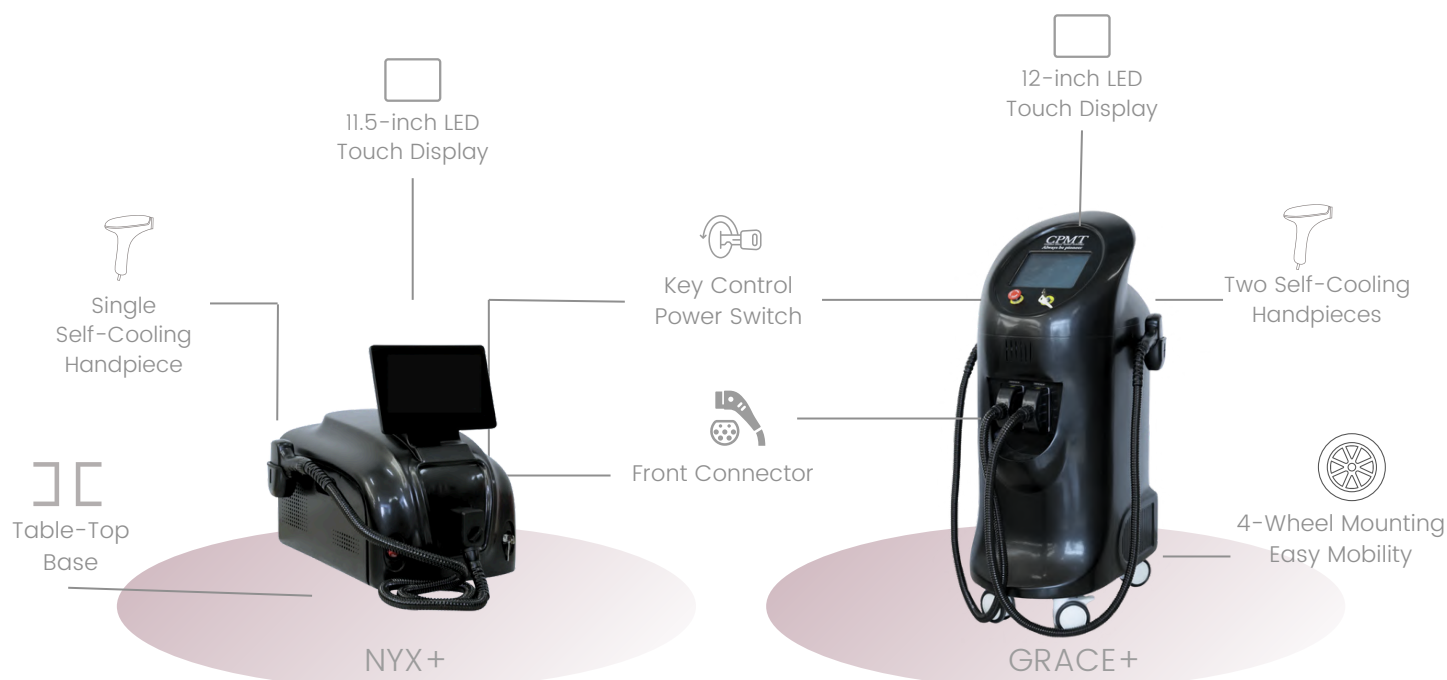
ARES 72kg, 79 x 46 x 76 cm	NEMESIS 72 kg, 79 x 46 x 76 cm
Certification	FDA Cleared K211722
Manufacturer	CPMT Laser
Country	Canada
Warranty Details	1 year (extendable to 5)

[back to top](#)

Technical Specifications



Skin Types I-VI



Spot Sizes
Variable



Energy per Area (Fluence)
120 J/cm²



Pulse Duration
1-400 ms



Voltage Selection
Globally Compatible



Pulse Repetition
1-10 Hz

NYX+ 35kg, 50 x 60 x 50 cm	GRACE+ 49 kg, 76 x 55 x 120 cm
Certification	FDA Cleared K211722
Manufacturer	CPMT Laser
Country	Canada
Warranty Details	1 year (extendable to 5)

[back to top](#)

Treatments and Applications

ARES, NEMESIS, GRACE+, NYX+



permanent
hair removal



vascular lesion
treatment



benign pigmented
lesions



skin
tightening



spider veins



venous lake &
port wine stains



skin
rejuvenation



angioma and
hemangioma

Diode Laser

Powered by DermaCore®

Armo

Hera

Grace

Nyx



FDA
CLEARED

K212793 K210033



Advanced Technology

Specifically designed to target and destroy hair follicles



Excellent Performance

Delivers a fluence of 120 J/cm², providing powerful energy for effective hair removal.



Variable Spot Sizes

Diode laser with handpieces that offer varying spot sizes



Self-Cooling Handpiece

The self-cooling handpiece minimizes discomfort and maximizes patient safety



Voltage Selection

Works seamlessly worldwide —no need for external transformers or converters.





Spot Sizes

 Variable



Energy per Area (Fluence)

 120 J/cm^2



Pulse Duration

 1-400 ms



220 110

Voltage Selection

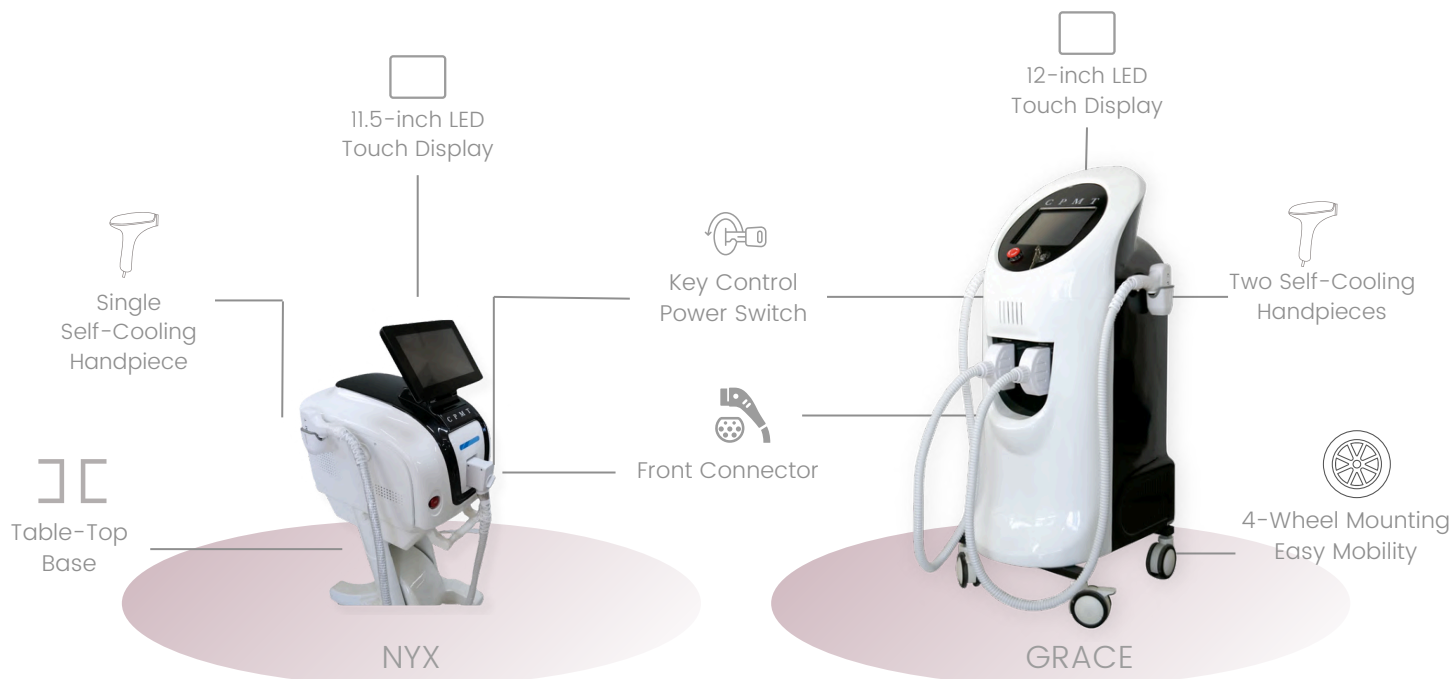
 Globally Compatible



Pulse Repetition

 1-10 Hz

ARMO: 72kg, 79 x 46 x 76 cm	HERA: 72 kg, 79 x 46 x 76 cm
Certification	FDA Cleared K212793
Manufacturer	CPMT Laser
Country	Canada
Warranty Details	1 year (extendable to 5)



Spot Sizes
Variable



Energy per Area (Fluence)
120 J/cm²



Pulse Duration
1-400 ms



Voltage Selection
Globally Compatible



Pulse Repetition
1-10 Hz

NYX: 35kg, 50 x 60 x 50 cm	GRACE: 49 kg, 76 x 55 x 120 cm
Certification	FDA Cleared K210033
Manufacturer	CPMT Laser
Country	Canada
Warranty Details	1 year (extendable to 5)

[back to top](#)



CPMT Laser

Precision, Innovation & Excellence in Laser Manufacturing

www.cpmt-laser.com

CONTACT US



CPMT Laser USA

 +1 (833) 985 1717

 66 W Flagler St.,
Miami, FL 33130, USA



CPMT Laser HQ

 +1 (833) 985 1717

 info@cpmt-laser.com

 460 Garyray Dr.,
Toronto, ON M9L 1P8,
Canada